



Road Vehicle Inspection Camera

User Guide

Solution Overview

The IBC Cube Vehicle Inspection Camera is used for videography of road projects and directly uploads the media on the cloud. With this easy to use camera, you can use your regular patrol vehicle and regularly get the latest status and update of all your remote projects on your fingertips. This is a plug and play vehicle inspection camera and needs no other additional infrastructure requirement



Step 1 : Attach the Camera Stands to the Camera

The camera comes with two different stands. One of them is a single suction mount stand and the other one is a double suction mount stand. The single suction mount stand is supposed to be attached in the front part of the camera and the double suction mount stand is supposed to be attached behind the single suction mount stand (as shown in the picture below)



Step 2 : Connection the Camera with the vehicle battery

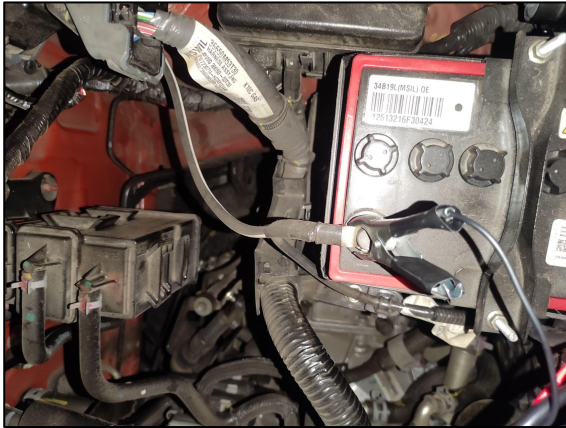
The camera is to be connected with the car battery.

Camera Connection : The camera needs to be connected after the GPS device and and this connection has to be done step wise.

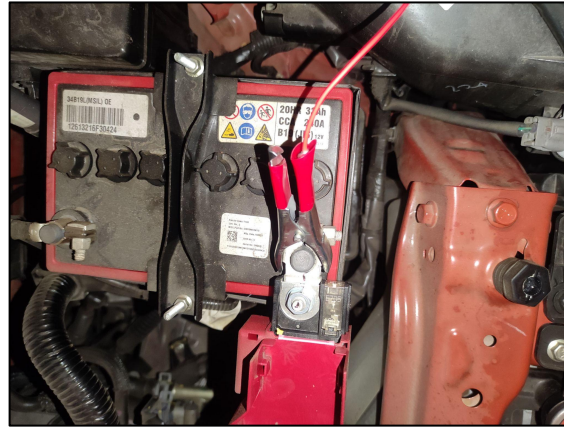
Step 1 : Connect the negative clip first (*Please refer to the picture 1 below*)

Step 2 : Connect the positive clip next (*Please refer to the picture 2 below*)

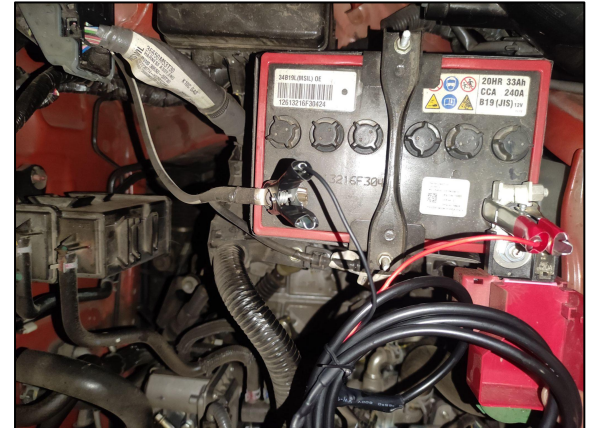
Step 3 : The camera connection should look something like *picture 3* below



Step 1



Step 2



Step 3

Step 3 : Connection of the GPS with the vehicle battery

The camera comes with a GPS and the connection of that device is to automatically done once the camera is connected with the car battery. The images of the GPS is shown in the picture 1 and 2 below -

GPS Connection :

The part with the device ID should be facing upwards (Please refer the picture 3 below)



Picture 1



Picture 2



Picture 3

Step 4 : Clean the bonnet to make sure the camera is attached properly

The bonnet of the vehicle should be properly clean to attach the camera.
Make sure to connect the suction mounts only after properly cleaning the dust from the bonnet.

(Please refer to the image below for the same)



Step 5 : Attach the camera to the vehicle

Once the camera wires are connected to the battery, the camera (along with the stand as shown in Step 1, has to be attached to the bonnet of the car as shown in the picture below. The camera should be attached exactly at the center of the vehicle.

Make sure that the stand with the double mount is attached at the back of the camera, while the stand with one suction mount is attached in the front of the camera.



Step 2



Step 2



Step 3

Step 6 : Check if the LED behind the camera is lit

Once the camera is attached to the bonnet of the vehicle, check the led light attached behind the camera to make sure that the connection is done properly.
(Please refer the picture attached below)



LED light on

Step 7: Checks to be done with IBC Cube support before starting the inspection

Once the camera and the GPS device is attached as shown in the photos in the previous pages, please contact IBC Cube support at +91 9163396205 to check three major information before starting the inspection-

1. Please drop an email to operations@ibccube.com at least 24 hours in advance to make sure that a support personnel is assigned for the upcoming inspection
2. If the GPS data is reflecting in the dashboard or not?
3. Any inspection should start only after the GPS starts giving data
4. If the angle of the camera and confirm whether the camera is properly aligned or not.
5. If the 'Video Enabled' option is 'On' or not
6. Make sure to maintain a speed of 30-35 KM/Hr during the inspection

After confirming these things you can go ahead with the Inspection.

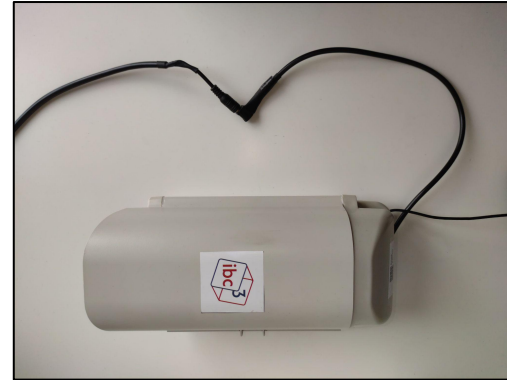


Points to remember :

- 1) If the vehicle needs to stop for a break more than 5 mins or when the inspection of the other side is started, please call IBC support at +91 9163396205 before going ahead.
- 2) After the inspection is complete, confirm if everything is updated at the backend with IBC Cube support
- 3) Once the inspection is complete, disconnect the camera wire from the battery, remove the camera from the vehicle and put the camera on power overnight using the adapter provided in the camera kit. This is done just as a precautionary step to make sure that all the videos are properly uploaded and there is no error in the footage
- 4) If at any point in time, a manual restart is required, please make sure to disconnect the adapter for 10 seconds and connect it again (*As shown in the photos below*)



Step 1 : Disconnection of the adapter from the battery



Step 2 : Connection of the adapter from the battery after 10 seconds

Inspection of Service Roads/Slip Roads/Any Other Road

Once the camera and the GPS device is attached as shown in the photos in the previous pages, please contact IBC Cube

support at +91 9163396205 to check three major information before starting the inspection-

- 1) Please drop an email to operations@ibccube.com at least 24 hours in advance to make sure that a support personnel is assigned for the upcoming inspection
- 2) If the GPS data is reflecting in the dashboard or not?
- 3) Any inspection should start only after the GPS starts giving data
- 4) If the angle of the camera and confirm whether the camera is properly aligned or not.
- 5) If the 'Video Enabled' option is 'On' or not
- 6) Make sure to maintain a speed of 30-35 KM/Hr during the inspection
- 7) Please make sure to stop the vehicle for at least 2 minutes before starting a new stretch and after ending a new stretch

The person responsible for the service roads inspection is requested to kindly take the start and end time of each stretch of the service road in a table format like -

SN	Type of Road (Service/Slip/Other)	Side	Start Chainage	End Chainage	Entry Time	Exit Time

Thank you

To find out more

Visit our website at www.ibccube.com

Email us at operations@ibccube.com

Call us on +91 9163396205